

PRODUCT LINE

Item	Product Name
CK-FTS-374	CHIKO Tin Roof Clamp No.374

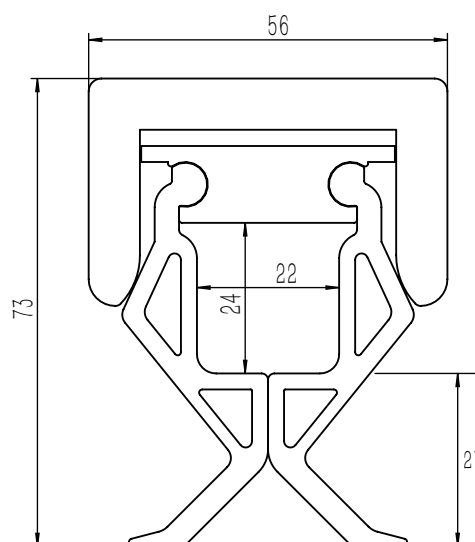
TECHNICAL DATA

Main Material	AL 6005-T5
Tighten torque	15N.m
Safe torque	20N.m

Standing Seam Clamp 374

The CK-FTS-374 clamp is designed especially for double-folded vertical standing seam roof profiles.

It's extremely simple and fast to install the clamp by simply loose or tighten the single bolt on the top, only 50% or less time needed compare with current clamps.



ADVANTAGES

- Pre-assembled
- Easy installation
- Highly waterproof
- High class anodized

COMPONENT LIST

MATERIAL	QTY
#374 Clamps	01
SUS304 bolts M8*35	01
SUS304 Spring washer M8	01
SUS304 Flat washer M8	01

WARRANTY



ORDERING SPECIFICS

Standard Packaging	18PCS/BOX 72PCS/CTN
Dimensions	50x20x38CM
Weight	18KGS